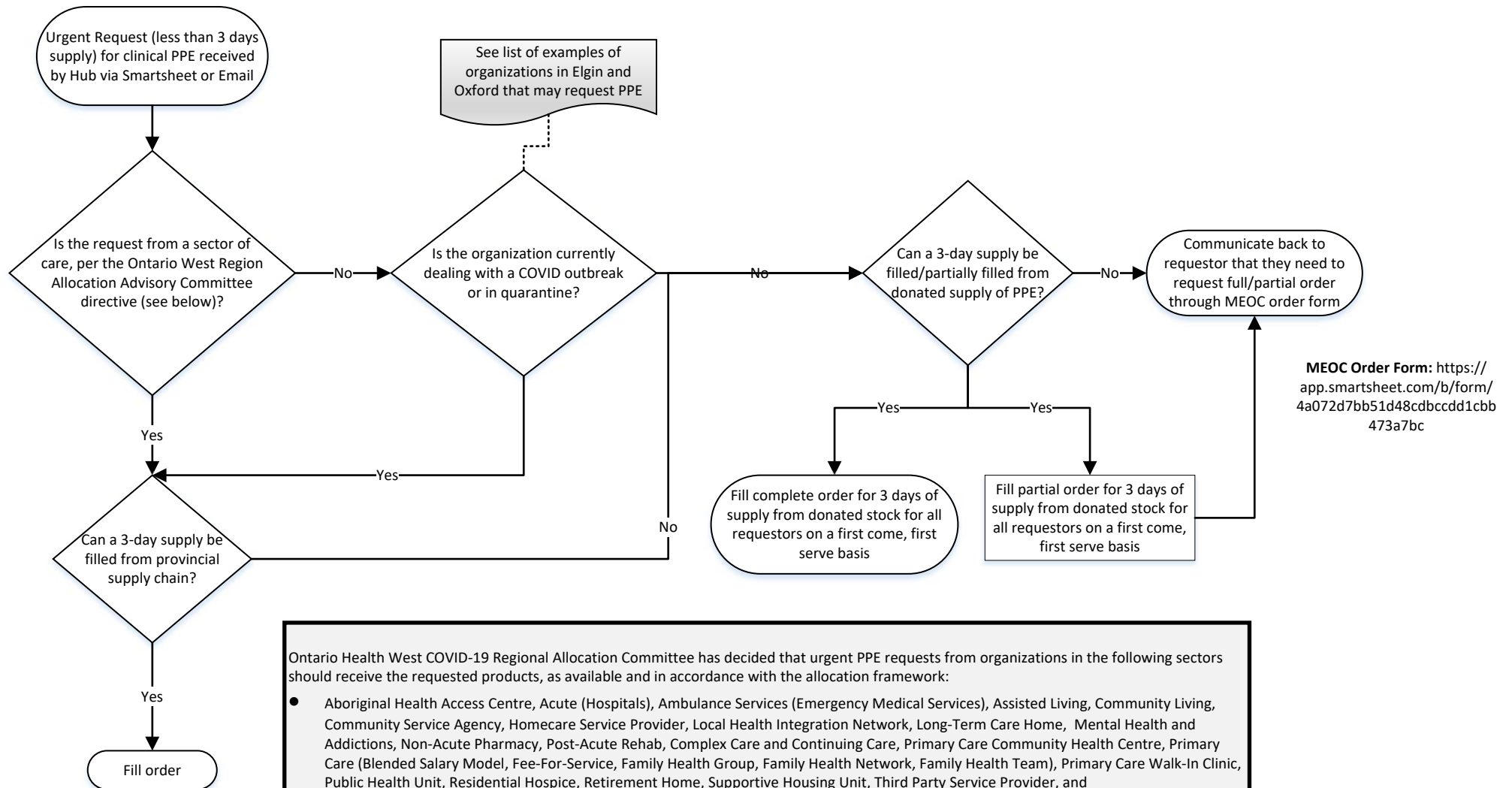


Clinical Personal Protective Equipment (PPE) Decision-Making Process – Elgin and Oxford Hubs

1. All providers should continue to practice PPE stewardship, following their internal PPE policies. The system must ensure we are using PPE in alignment with clinical guidelines, and develop strategies to reduce the unnecessary use of PPE.
2. All providers should continue to try and source supplies and equipment through their normal channels and partner amongst each other to secure supplies.
3. Providers should escalate to the area hub closest to them by completing the Urgent Pandemic Supply Request Form (<https://hospital.sw.ccac-ont.ca/ppeexternal/sw.html>). Should the area hub be unable to secure the items locally, the order will be escalated to the Ministry’s Emergency Operations Centre (MEOC).



MEOC Order Form: <https://app.smartsheet.com/b/form/4a072d7bb51d48cbccdd1cbb473a7bc>

Ontario Health West COVID-19 Regional Allocation Committee has decided that urgent PPE requests from organizations in the following sectors should receive the requested products, as available and in accordance with the allocation framework:

- Aboriginal Health Access Centre, Acute (Hospitals), Ambulance Services (Emergency Medical Services), Assisted Living, Community Living, Community Service Agency, Homecare Service Provider, Local Health Integration Network, Long-Term Care Home, Mental Health and Addictions, Non-Acute Pharmacy, Post-Acute Rehab, Complex Care and Continuing Care, Primary Care Community Health Centre, Primary Care (Blended Salary Model, Fee-For-Service, Family Health Group, Family Health Network, Family Health Team), Primary Care Walk-In Clinic, Public Health Unit, Residential Hospice, Retirement Home, Supportive Housing Unit, Third Party Service Provider, and
- Any organization that is “currently dealing with a COVID outbreak” or “in quarantine”